

Better community-led decision-making in Gladstone



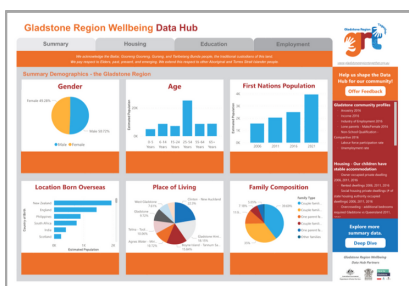
At a Glance

Gladstone Region engaging in action Together (GRT) is a community-led, place-based initiative improving community well-being.

GRT facilitates the Gladstone Region Wellbeing Data Hub, a community-built and owned data resource that helps monitor and measure change towards improved well-being for local families.

The Data Hub provides the community with centralised access to data to identify and quantify changes and impacts on the community and to monitor and evaluate progress towards a range of identified well-being goals:

- Families have access to life's basics, feel independent, and have a purpose;
- Children feel safe, happy and loved, growing up at home with their families;
- Children are starting school ready to learn and on track to thrive.



Access to Data



Capacity Building



Collective Outcomes

Vision

Opportunity, equity, and quality of life for everyone in the Gladstone Region.

Data & Action

The Gladstone Region Wellbeing Data Hub provides government and locally supplied data to support, prioritise and focus well-being efforts, measure impacts and monitor change for early intervention. It helps identify where the community needs to collectively focus their efforts.

Seer Data & Analytics supported the Data Hub by building a dedicated dashboard for data visualisation.

For the Gladstone Region this means:

- Opportunity for cross-sector shared knowledge;
- An evolving community-owned asset of relevant data;
- Better community-led decision-making.

The Gladstone Region Wellbeing Data Hub is supported by Here for Gladstone, the social investment fund for Rio Tinto Yarwun, Boyne Smelter Limited and Queensland Alumina Limited, and the Australian and Queensland Government.

Future Outlook

GRT is currently working with local and government partners on the co-design of further inclusion in the Data Hub.

"In partnership with Seer Data, GRT is leveraging the power of data for better decision-making through our community-built and owned Gladstone Region Wellbeing Data Hub, enabling us to monitor and measure change towards improved wellbeing in our local communities."

Lorna McGinnis
Executive Director
Gladstone Region engaging in action Together

